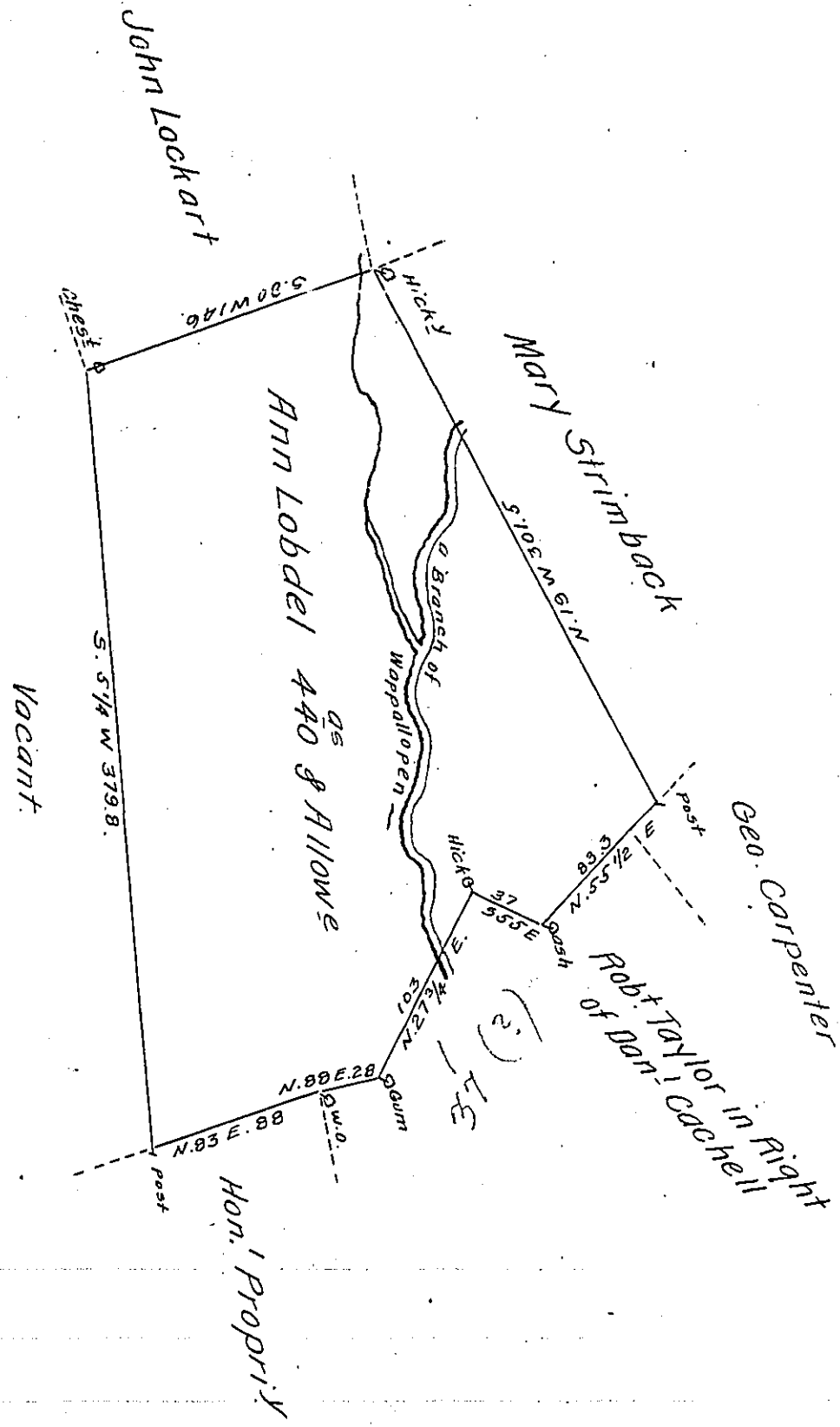


402-161-2



A Draft of a tract of land Called — Situate in the County of Luzerne
 Containing four Hundred & forty acres & Allow^e Surveyed for Ann.
 Lobdel the 4th day of Nov^r 1793 by Virtue of a Warrant dated the 14th
 day of Jan^y 1793.

To by W^m Gray D.S.
 Daniel Brodhead Esq^r }
 Surv^r Gen^l }

IN TESTIMONY that the above is a copy of the original remaining on file in
 the Department of Internal Affairs of Pennsylvania, made
 conformably to an Act of Assembly approved the 16th day of
 February, 1833, I have hereunto set my Hand and caused
 the Seal of said Department to be affixed at Harrisburg,
 this fourteenth day of September 1910.

Henry Houck
 Secretary of Internal Affairs.